

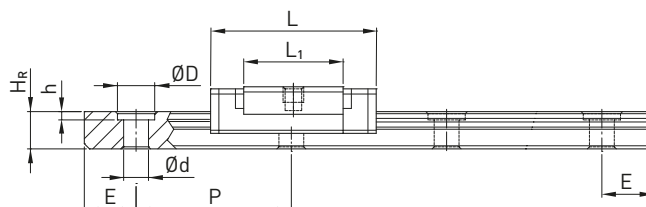
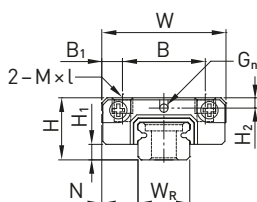
Lineární vedení

Řada MG

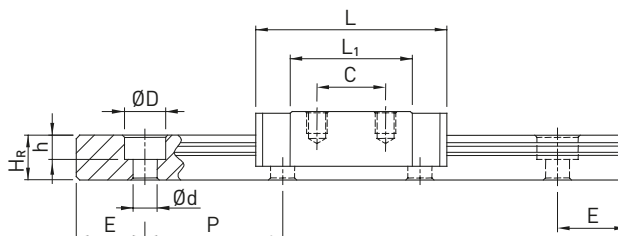
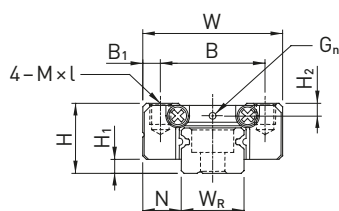
3.5.10 Rozměry vozíku MG

3.5.10.1 MGN

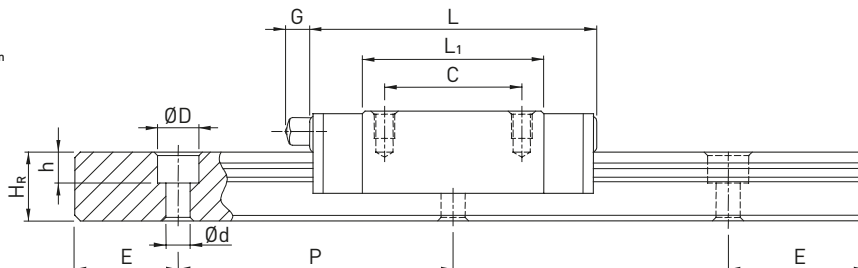
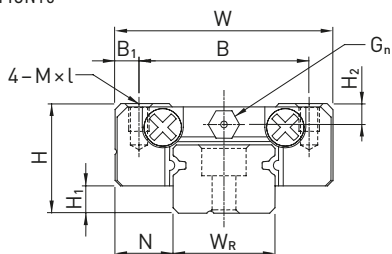
MGN05



MGN07, MGN09, MGN12



MGN15



Tabulka 3.82 Rozměry vozíku

Řada/ rozměr	Montážní rozměry [mm]			Rozměry vozíku [mm]										Únosnosti [N]		Hmotnost [kg]
	H	H ₁	N	W	B	B ₁	C	L ₁	L	G	G _n	M × l	H ₂	C _{dyn}	C ₀	
MGN05C	6	1.5	3.5	12	8	2.0	—	9.6	16	—	Ø0.8	M2 × 1.5	1.0	540	840	0.008
MGN05H							—	12.6	19					667	1,089	0.010
MGN07C	8	1.5	5.0	17	12	2.5	8	13.5	22.5	—	Ø1.2	M2 × 2.5	1.5	980	1,245	0.01
MGN07H							13	21.8	30.8					1,372	1,960	0.02
MGN09C	10	2.0	5.5	20	15	2.5	10	18.9	28.9	—	Ø1.4	M3 × 3	1.8	1,860	2,550	0.02
MGN09H							16	29.9	39.9					2,550	4,020	0.03
MGN12C	13	3.0	7.5	27	20	3.5	15	21.7	34.7	—	Ø2	M3 × 3.5	2.5	2,840	3,920	0.03
MGN12H							20	32.4	45.4					3,720	5,880	0.05
MGN15C	16	4.0	8.5	32	25	3.5	20	26.7	42.1	4.5	M3	M3 × 4	3.0	4,610	5,590	0.06
MGN15H							25	43.4	58.8					6,370	9,110	0.09

Rozměry kolejnice viz kapitola 3.5.11, standardní a volitelné maznice a viz kapitola 4.1.